

SERVICE



Personal Protective Equipment Training

Friday, April 12, 2024

9:00 a.m.- 12:00 p.m.

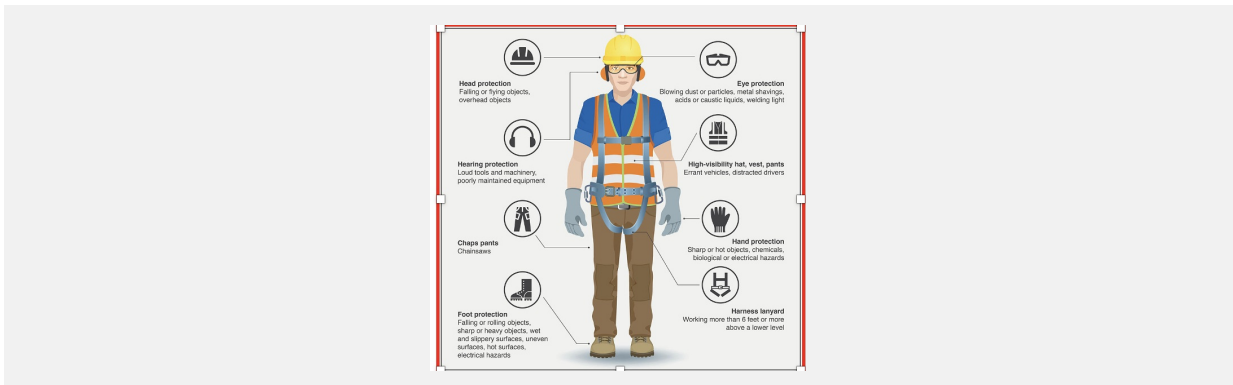
Virtual training

Must remain on camera at all times on a separate device to participate. (no groups)

[Register here](#)

Participation in this seminar qualifies the MIA member for .5% MIA Rewards credit under the Workers Compensation Category

TOPICS OF DISCUSSION



PERSONAL PROTECTIVE EQUIPMENT (PPE)

Background and Statistics

OSHA Regulations & DLS Enforcement

Hazard Assessments

Selection of PPE and Proper Fit

Protection and Limitations

Inspection

Use

Storage

Maintenance

Disposal



ABOUT THE PRESENTER:

Kimlee has enjoyed the safety and health profession for over 41 years. She currently works for the Massachusetts Municipal Association (MMA) as the MIIA Senior Risk Management Trainer. Prior to this position, she served as the Site Safety Officer for the South Coast Rail Project for the MBTA. And prior to that, she served as the Deputy Director for Occupational Health and Safety for the MBTA.

For 31 years, she has developed curriculum and conducting training nationwide for the OSHA Training Institute Education Centers. Her expertise is in construction and maritime with previous employment with general contractors, specialty contractors, general industry, insurance companies and trade associations. Kim is also a former compliance officer for Cal/OSHA. She is a Professional Member of the American Society of Safety Professionals (ASSP), past president of the San Diego Chapter and 2018 recipient of the ASSP Construction Safety Professional of the Year award.

@All rights reserved.



Massachusetts Interlocal Insurance Association | Serving Massachusetts' communities since 1982
Boston, MA | 617-326-7272 | 800-882-1498 | www.emaiia.org

MIIA | 3 Center Plaza , Suite 610 , Boston, MA 02108

[Unsubscribe mmarino@mma.org](mailto:mmarino@mma.org)

[Update Profile](#) | [Constant Contact Data Notice](#)

Sent by mmarino@mma.org powered by



Try email marketing for free today!